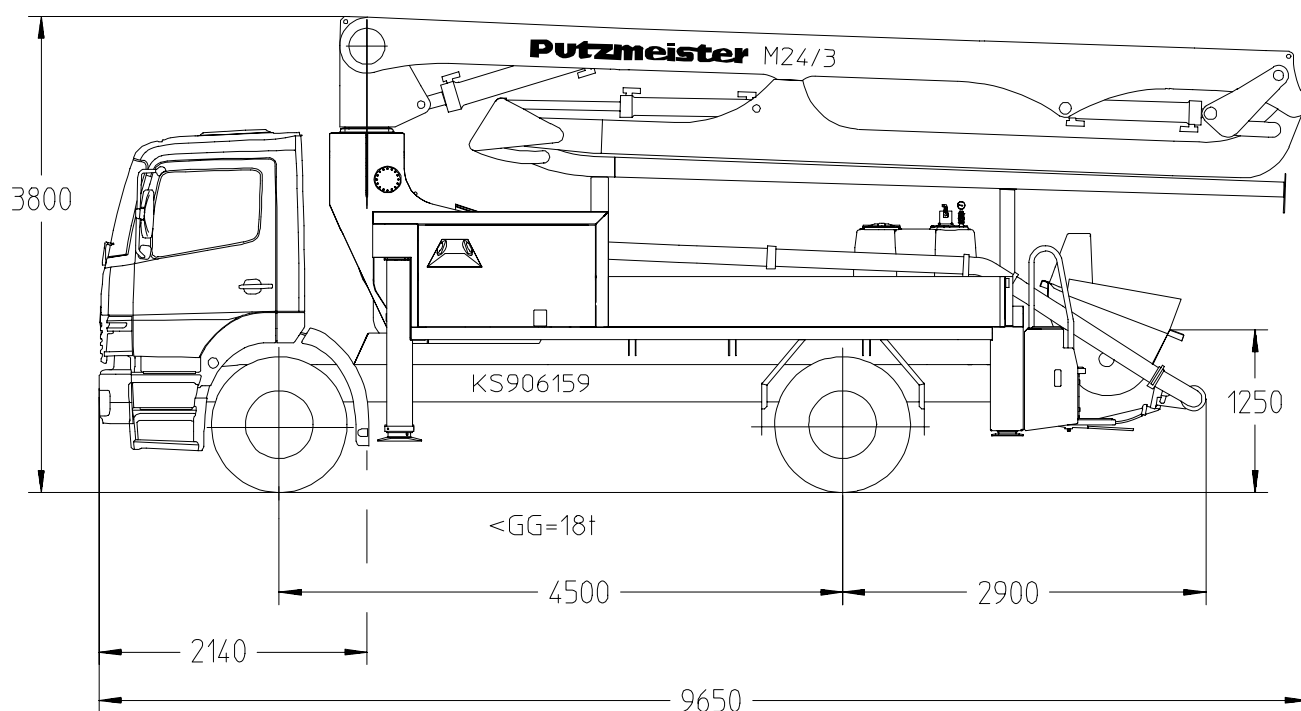
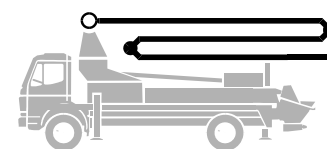


Truck-mounted concrete pump

BSF 24.09 H

Output up to 90 m³/h
Delivery pressure up to 78 bar



Note: Standard version. Dimensions and weights depend on truck and pump model.
Dimensions in mm, MB-Axor 1828 as example

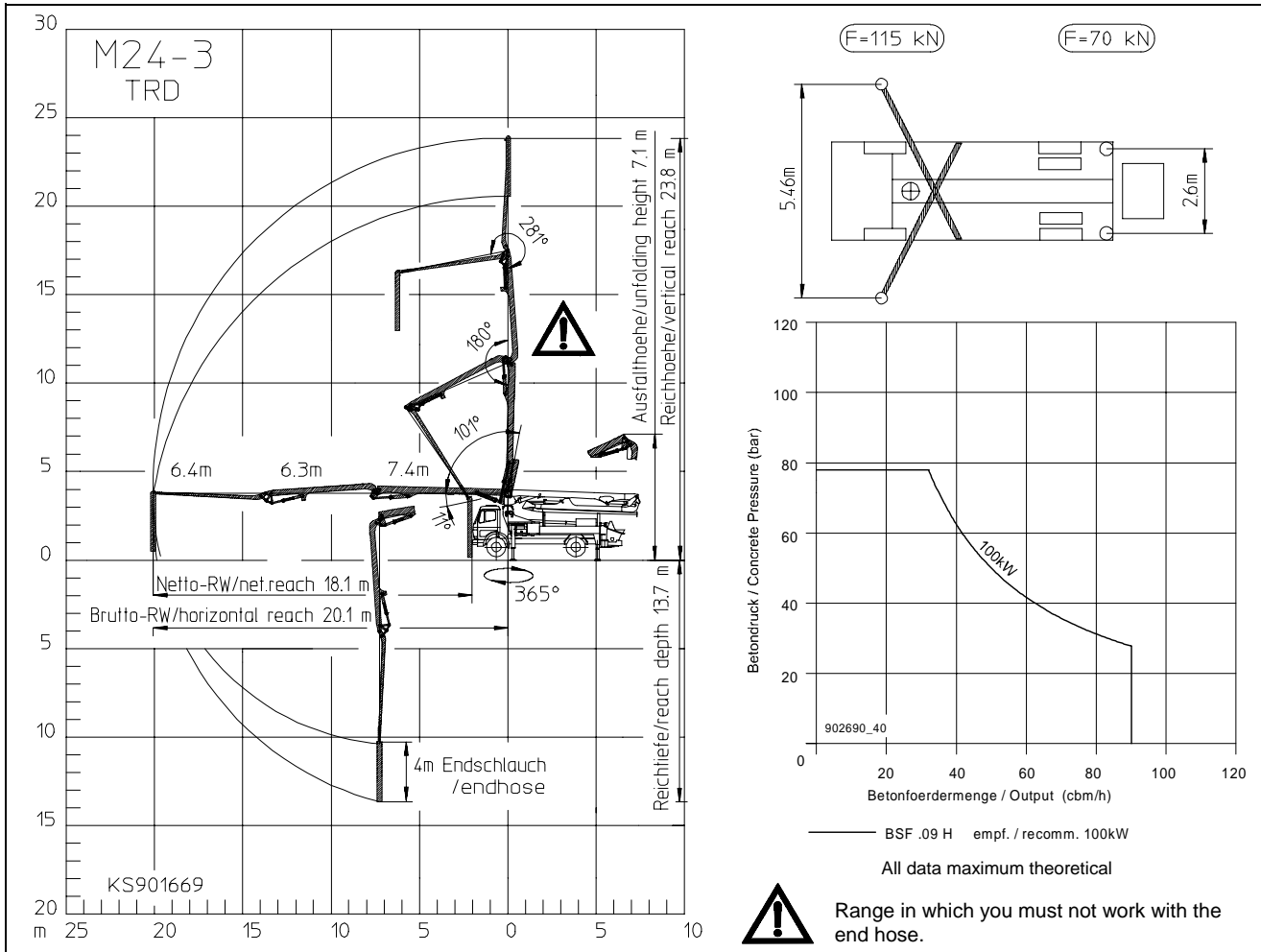
Technical Data

Boom M 24-3		
Reach height	m	23.8
Horizontal reach	gross	m 20.1
	net	m 18.1
Reach depth max.	m	13.7
Unfolding height	m	7.1
End hose length	m	4
Number of arms	3	
Folding system	Z-fold (Z)	
Delivery line	DN 125/5.5	

Pump		BSF	.09 H
Rod side	Output	m ³ /h	-
	Delivery pressure	bar	-
	Strokes	1/min.	26
Piston side	Output	m ³ /h	90
	Delivery pressure	bar	78
	Strokes	1/min.	26
	Delivery cylinder	∅ mm	230
	Stroke	mm	1400

All data maximum theoretical.

Reach information diagram, Support, Performance diagram



Delivery scope

	Standard	Options Package *	Options Package Plus
support plates 4x in magazine	●		
concrete hopper RS 900 with agitator	●		
diagnose interface, central for electric and hydraulic	●		
remote control CPC with 25 m cable with output remote control by regulator, engine start/stop	●		
central lubrication strip hopper	●		
rubber collar	●		
painting: arm assembly RAL 3020 signalred	●		
painting: pump MB 1227 chrome yellow	●		
flushing water pump 160 l/min 25 bar	●		
water tank	●		
concrete line DN125 5,5", 133x4	●		
concrete line DN125 5,5", PM 22 twin layer		●	
concrete line DN125 5,5", PM 252 Proline			●
traffic permission kit		●	●
radio remote control prop.incl. CPC with output remote control by regulator, engine start/stop		●	●

	Standard	Options Package *	Options Package Plus
plash guard foldable on rubber collar		●	●
EOC (Ergonic output control)		●	●
central lubrication hopper, electrical		●	●
horn at the boom		●	●
flashlights for 2 support legs front			●
lights 2x front side, for illumination support area front			●
high pressure water pump 100 bar with dry-run protection			●
vibrator, electrical			●
hard metal wear parts kit			●

* recommended in Europe

Please see quotation for exact serial delivery scope.